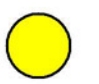








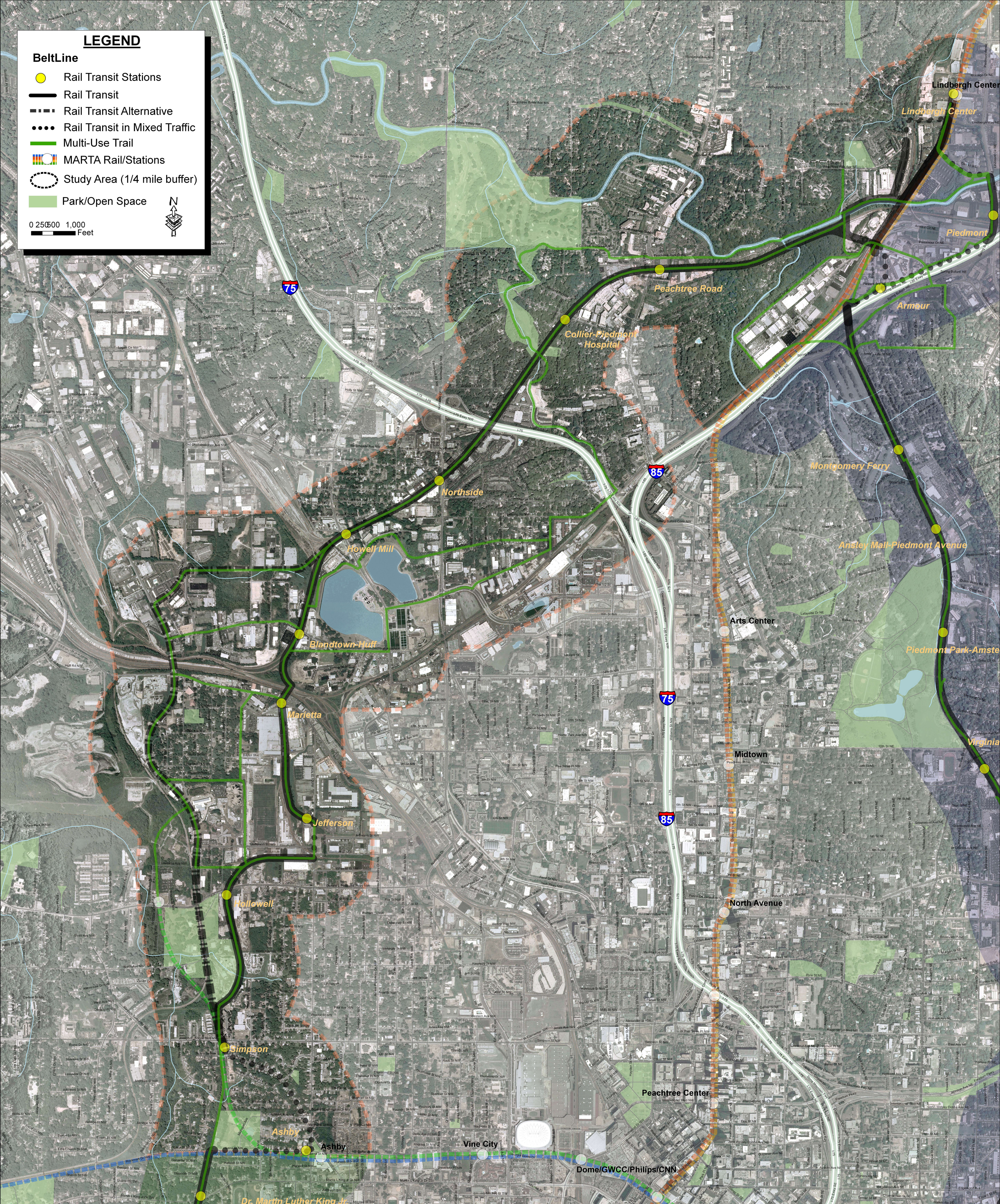


**LEGEND**

-  Rail Transit Stations
-  Rail Transit
-  Rail Transit Alternative
-  Rail Transit in Mixed Traffic
-  Multi-Use Trail
-  MARTA Rail/Stations
-  Study Area (1/4 mile buffer)
-  Park/Open Space

0 25000 1,000 Feet

**BeltLine Proposed Alignment - Northwest Zone**  
**RAIL TRANSIT AND MULTI-USE TRAIL**