

BeltLine Corridor Environmental Study



BeltLine

Environmental Effects Report (EER)
Public Hearing

May 14, 2009

Agenda & Introductions

- Opening
- Overview of the BeltLine Project
- Environmental Effects Report (EER) Overview
- Comments
- Next Steps

EER Public Hearing

- Why Are We Here This Evening?
 - Review of the BeltLine Corridor project and the Northeast Zone study area
 - Describe transit and trail alignment options being considered for the BeltLine in the Northeast Zone
 - Outline the environmental effects
 - Identify actions to mitigate and minimize effects
 - Help us determine key environmental issues and concerns as we move forward



Overview of the BeltLine Project

BeltLine Project Purpose and Need



Community Needs

Mobility



BeltLine Outcomes

Transit, Trails & Transportation

Recreation



Parks and Greenspace

Economic Development



Transit Supportive Land Use

Workforce Housing



Affordable Housing Trust Fund

Cultural Resources



Historic Preservation, Public Art

EER Overview

Georgia Environmental Policy Act (GEPA)

- GEPA requires EER for:
 - Land-disturbing activities
 - By state agencies / authorities (e.g., MARTA, Atlanta Development Authority)
 - With possibly significant adverse effects on environment
 - Applies to non-federal agency funds supporting land-disturbing projects



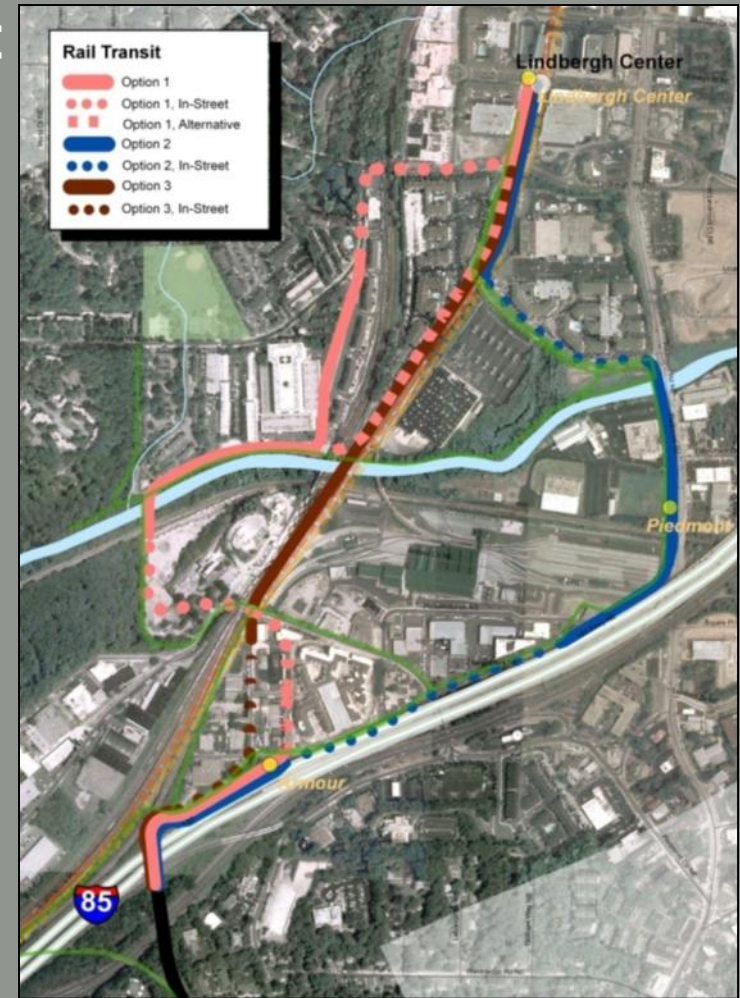
EER Study Area

- Northeast Zone:
 - Inman Park/Reynoldstown to Lindbergh Center MARTA stations
 - Approximately 6.5 miles
 - Includes Atlanta Development Authority (ADA) right-of-way



EER Alternatives

- No Build Alternative includes:
 - Baseline for EER Analysis
 - Includes existing transportation network, committed projects in regional transportation plans
- Build Alternative includes:
 - Transit
 - Multi-Use Trails
 - Three transit-and-trail alignment options north of Interstate 85



Build Alternative

- Transit guideway:
 - Rail vehicles run on electricity
 - A system of overhead wires is used
 - Station platforms are included
- At least 12 transit stations
- Storage and maintenance facility
 - New facility in Armour Yard area



Build Alternative

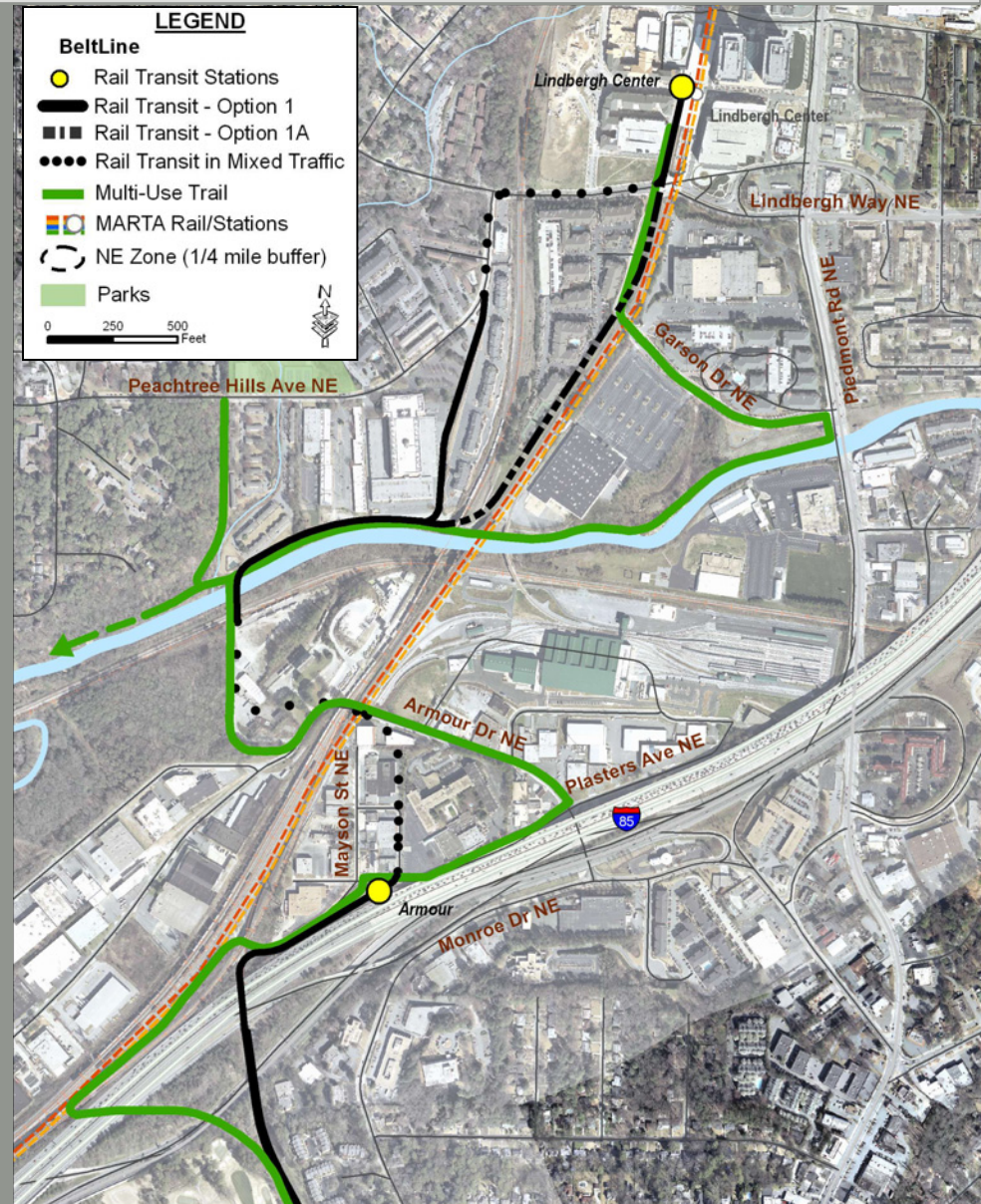
- Multi-Use Trails:
 - Pathway and linear park space
 - Shared by pedestrians, bicyclists, etc.
 - Typically separate from motor vehicle traffic (via open space or barrier)
 - Supports passive and active recreation, as well as mobility



Alignment Options

Transit-Trails Option 1 (and Transit Option 1A)

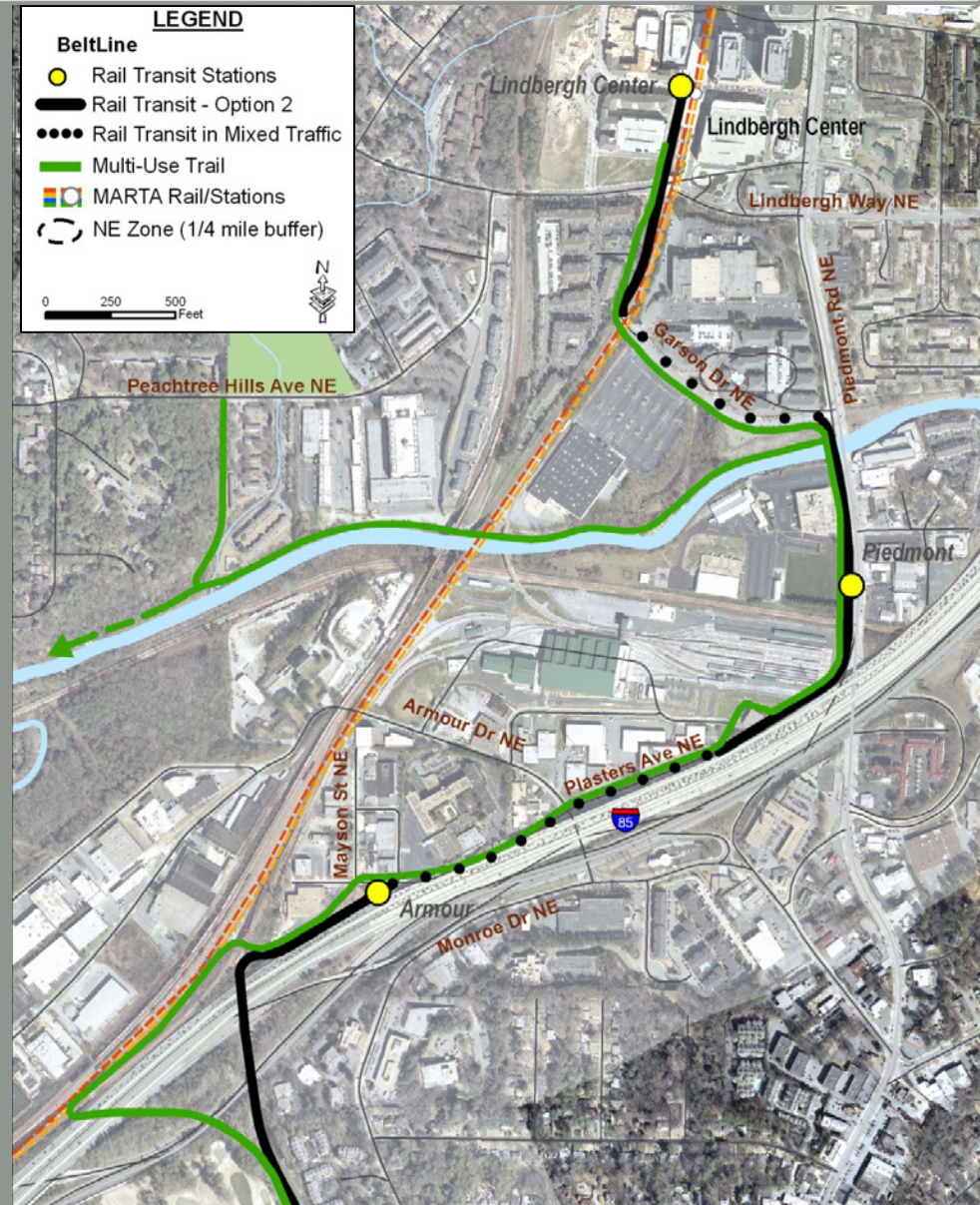
- Access from west of railroad
- Transit:
 - Option 1 - In-street via Peachtree Hills Avenue and Lindbergh Drive
 - Option 1A - parallel to Garson Drive
- Trails via Armour Drive



Alignment Options

Transit-Trails Option 2

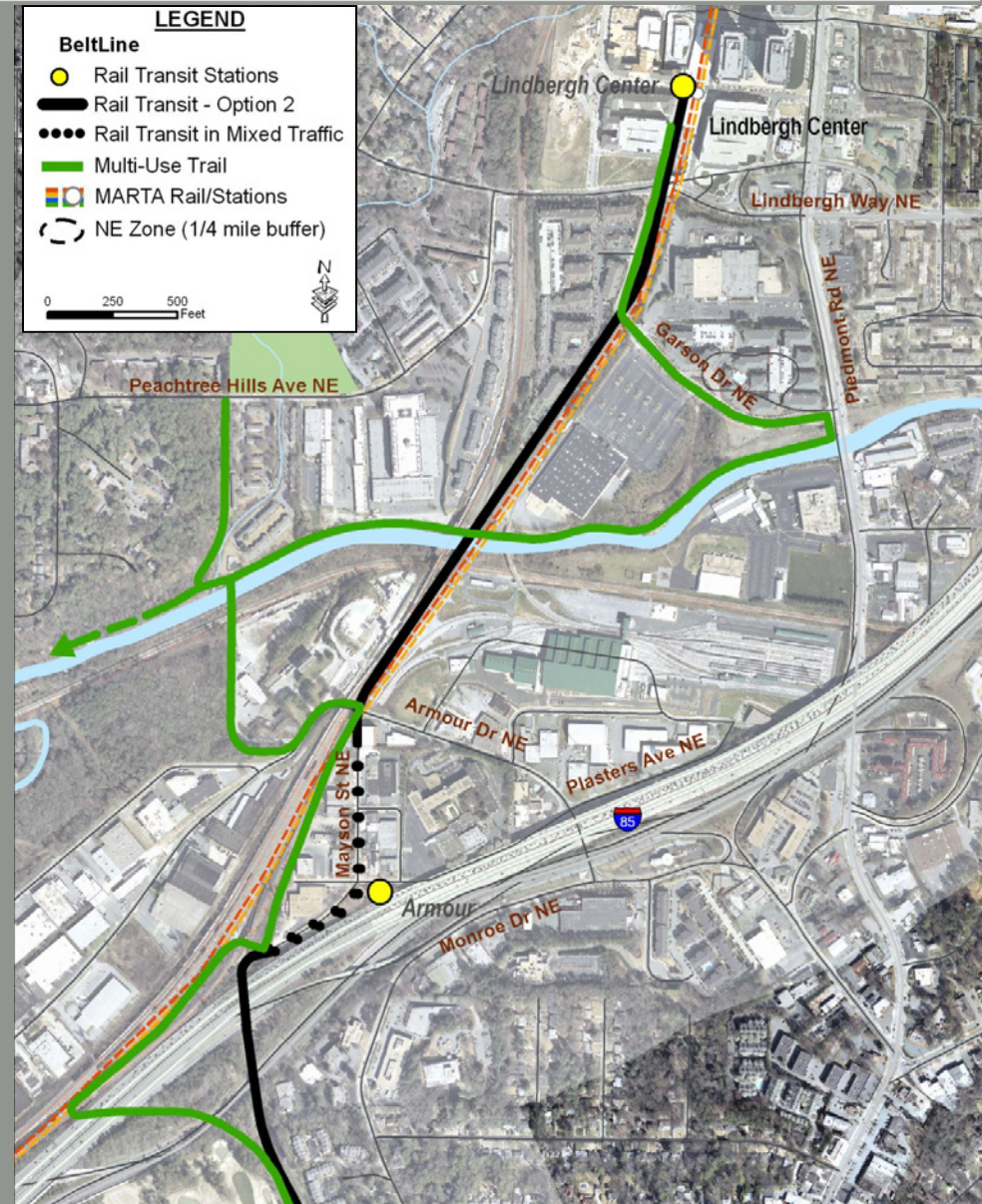
- Access from east of railroad
- Transit and Trails via Plasters Avenue, Piedmont Road, Garson Drive
- Transit station at Piedmont Road



Alignment Options

Transit-Trails Option 3

- Transit access parallel to railroad
- Transit via Mayson Street
- Trails via Armour Drive



Environmental Settings

Water Resources

- Study area within the Upper Chattahoochee River Basin
 - 8 perennial streams
 - 3 intermittent streams
 - 1 ephemeral stream
 - 2 wetlands
 - 100-year floodplains:
 - Peachtree Creek
 - Clear Creek



Environmental Settings

Recreational Resources

- 14 parks/recreational areas
 - 10 existing public parks/recreational areas
 - 2 planned public parks
 - 2 privately owned recreation areas



Environmental Settings

- Within 200 feet of the proposed alignments:
 - 61 Hazardous Materials sites
 - 11 potential brownfields / underutilized sites
 - No solid waste landfills



Environmental Settings

Historic Resources

- 39 Historic Resources within the area of potential effect
 - 10 Listed in National/Georgia Register
 - 8 Historic Districts
 - Oakland Cemetery
 - Piedmont Park
 - 29 Eligible
 - 12 Historic Districts
 - 17 Additional Resources...



Environmental Settings

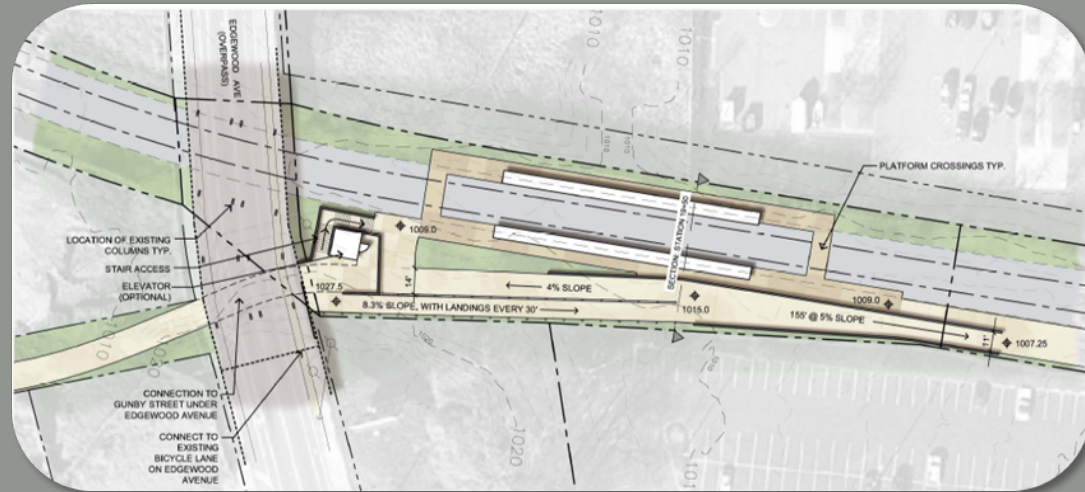
Additional eligible historic resources:

- 15 Additional buildings/structures
- 2 Multiple-property listings:
 - *Historic Resources of the Atlanta BeltLine Northeast Zone*
(Armour and Hulsey Yards, Southern Railway Corridor, Highland Avenue former terminal, 3 Structures crossing Clear Creek, 11 GDOT bridges)
 - *Atlanta's Historic Apartment Complexes*
(5 locations in Peachtree Hills and Ponce de Leon/ Midtown areas)



Environmental Effects

- EER measures effects to environmental and cultural resources
- Physical “Limits of disturbance” based on:
 - Extent of the transit track centerlines
 - Length and configuration of passenger stations
 - Trail configurations and access points
- EER assesses potential alterations to areas with recognized scenic, recreational, archaeological or historical value



Environmental Effects

Resource Types	Effects?	
	Yes	No
Streams and Stream Buffers	X	
100-Year Floodplain	X	
Storm Water, Waste Water	X	
Solid Waste, Landfill Capacity	X	
Soil Stability/Erodibility	X	
Historic Resources	X	
Archaeological Resources	X	
Parks, Recreation Facilities	X	
Energy Supplies	X	
Hazardous Materials, Brownfields	X	
Water Supply, Groundwater		X
Critical Habitat, Endangered Species, Aquatic Life		X
Forest Land		X

Environmental Effects

- Significance of effects
 - Minor effects
- For unavoidable, “minor effects”:
 - Identify minimization and mitigation strategies
 - Comply with federal, state and/or local requirements during design and construction
 - Coordinate with stakeholder agencies



Environmental Effects

- Natural Environment Impacts:

- Impacts to over 400 ft. of streams
- Encroachments of floodplains (near Peachtree Creek, Clear Creek)
- Stormwater runoff and wastewater
- Emissions of vehicle-borne contaminants
- Generation of hazardous and/or solid waste
- Soil erosion due to regrading
- Proximity effects to four parks/recreation resources



Environmental Effects

- Built Environment Impacts:
 - Adverse effect to one historic resource (Orkin/Rollins Building at Piedmont Road)
 - Disturbance of potential archaeological remains
 - Removal of venue parking area leased by Park Tavern restaurant
 - Energy expenditures for vehicles and facilities
 - Relocation of energy transmission and distribution lines



Environmental Effects

- Minimization/Mitigation Actions (Natural Environment):
 - Acquire 1,306 compensatory stream mitigation credits
 - Coordinate with federal, state and local agencies to minimize impacts to regulatory floodways
 - Manage stormwater runoff
 - Collect and dispose of wastewater



Environmental Effects

- Minimization/Mitigation Actions (Natural Environment, cont.):
 - Use control measures to prevent stormwater contamination
 - Avoid soil erosion and stream pollution through early re-vegetation of disturbed land areas
 - Coordinate temporary and permanent erosion control measures
 - Satisfy state and local stream buffer variance requirements



Environmental Effects

- Minimization/Mitigation Actions (Built Environment):
 - Where possible, preserve and re-use historic resources
 - Investigate archaeological sites prior to construction
 - Coordinate with local agencies to identify alternative venue parking
 - Evaluate protected areas under the Land and Water Conservation Fund



Environmental Effects

- Minimization/Mitigation Actions (Built Environment, cont.):
 - Coordinate with local utility agencies prior to construction
 - Assess conditions of hazardous materials sites before demolishing property or disturbing land
 - Identify opportunities to remediate brownfields.



Benefits and Economic Impacts

Environmental Benefits:

- Reduced vehicle miles traveled in the BeltLine Corridor
- Reduced automobile dependence
- Access to parks, recreation, enhancing public health
- Context-sensitive design in historic areas and neighborhoods
- Invasive species control
- Removal of hazardous materials, solid wastes



Benefits and Economic Impacts

Economic Advantages:

- Significant revitalization and redevelopment of underutilized areas
- Enhanced personal mobility
- Enhanced community circulation
- Relief of congested urban streets
- Access to jobs, schools, activity centers, housing
- New jobs
- Preservation of light industrial districts
- Expanded local tax base

Economic Disadvantages:

- Right-of-way (ROW) acquisition, business relocation (areas north of ADA ROW)
- Loss of taxable land



Assessment of Alternatives

Build Alternative Alignment Options:

- No options avoid environmental impacts
- No significant difference in impacts between Option 1 and Option 1A
- Option 2:
 - Fewest impacts to water resources and floodplains
 - Adverse effect to one historic resource

No Build Alternative:

- No net environmental effects
- Unable to generate new mobility and economic benefits



Environmental Effects Report (EER)

- Schedule:
 - Field Investigations and Technical Analyses *Complete*
 - Interagency Consultation *Complete*
 - EER Preparation *Complete*
 - EER Public Notice *May 2009*
 - ➔ EER Public Hearing *May 14, 2009*
 - Final Decision Document *June 2009*



Environmental Effects Report (EER)

Available Locations for the EER:

- Atlanta BeltLine Inc.
- MARTA Headquarters
- City of Atlanta, Bureau of Planning (City Hall)
- Central Atlanta Progress
- Fulton County Department of Environment and Community Development
- Fulton County Department of Public Works
- Atlanta-Fulton Public Libraries:
 - Central Library
 - Auburn Avenue Research Library
 - Buckhead Branch
 - Kirkwood Branch
 - Martin Luther King, Jr. Branch
 - Peachtree Branch
 - Ponce de Leon Branch



Comments

Thank You!